

# New England HOME



Celebrating Fine Design, Architecture, and Building

## Winter Wonders

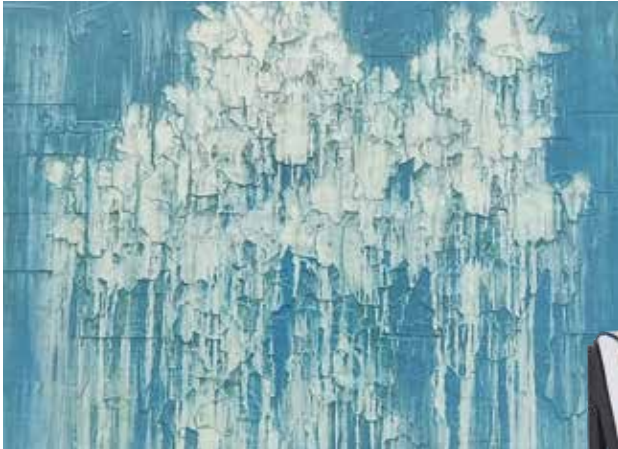
Living at the intersection of style and comfort



# Perspectives

## Style Scheme

1



2



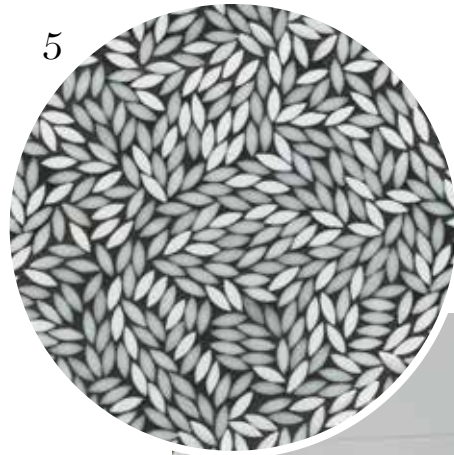
3



4



5



6



### Destination Lux

When we challenged interior designer **Emily Fuhrman** to imagine a luxurious bathroom retreat, she decided to create the space of her dreams. Selected elements combine to create a spa-like room that has an organic feel elevated with glamorous details.

✦ The design starts with a contemporary gas fireplace topped with a soothing blue painting as the focal point. A classic palette of black and white prevails, featuring a sculptural sink punctuated with a graphite faucet. There is also strong contrast reflected in the petal-like white tile emboldened with black grout. An elegant cluster of hand-blown glass pendants caps off the room and will cast a warm glow when Fuhrman enjoys a bubbly soak and a good book. | *Emily Fuhrman, Sage & Ginger Interior Design, New Canaan, (203) 594-9862, sageandginger.com*

**1. Human Ecology Blue, original artwork by Sara Cole, Elisa Contemporary Art, Fairfield and Riverdale, N.Y., elisacontemporaryart.com** | **2. Cocoon pendant lights, Shakuff, Brooklyn, N.Y., shakuff.com** | **3. Marc's chaise lounge, Julian Chichester, Wakefield Design Center, Stamford, wakefelddesigncenter.com** | **4. Ortal front-facing gas fireplace, Hearth Products, Southport, ortalheat.com** | **5. Artistic Tile Foliage glass mosaic tile in Be Bop White, Paramount Stone, Stamford and Norwalk, paramountstone.com** | **6. Clara vessel sink with Flyte wall-mounted faucet in graphite, Waterworks, Greenwich, waterworks.com**

| EDITED BY LYNDA SIMONTON |